



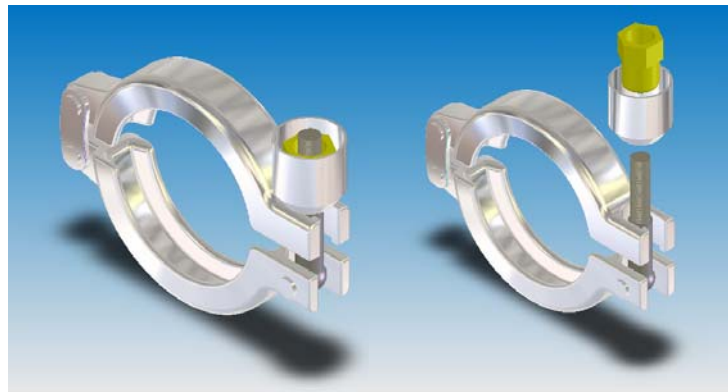
## LOCK-OUT CLAMP

Data Sheet 06-0045 01/07

L.J. Star Incorporated now offers varying styles of the Safety Clamp with the introduction of the Shrouded Safety Clamp and Lock-Out Safety Clamp. Both variations are designed to further increase the safety of hazardous high temperature piping lines often associated with steam and CIP / SIP cleaning processes.

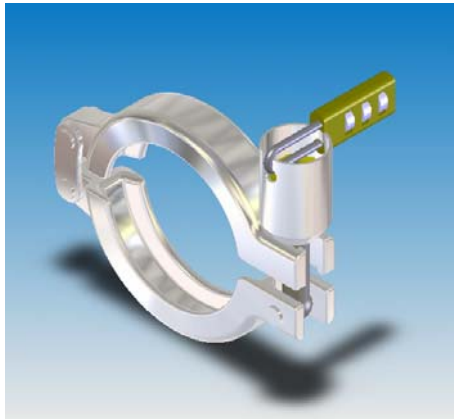
### Shrouded Safety Clamp

The shrouded safety clamp is based around the design principal of the standard SH Safety Clamp. This new variation benefits from the added safety feature of a domed nut replacing the wing-nut. Using the domed nut guarantees the clamp cannot be loosened by hand, this coupled with the added security of the free rotating nut shroud determines that the clamp can only be released using the correct socket adapter, alleviating problems where the piping line can easily be tampered with or accidentally released.



### Lock-Out Safety Clamp

The Lock-Out safety clamp is an advanced version of the shrouded safety clamp, the wing-nut has again been replaced with a shrouded domed nut, the shroud however is extended in length and modified to accept a number coded or key operated padlock. Once the clamp has been assembled, the padlock's shackle can be passed through the holes in the nut shroud stopping the hexagon head of the nut from being accessed and loosened by a spanner or socket set. The Lock-Out safety clamp ensures the process / piping line can only be accessed by a designated maintenance engineer who has the padlock's key / number combination.



PATENTED

PATENTED

PATENTED

PATENTED