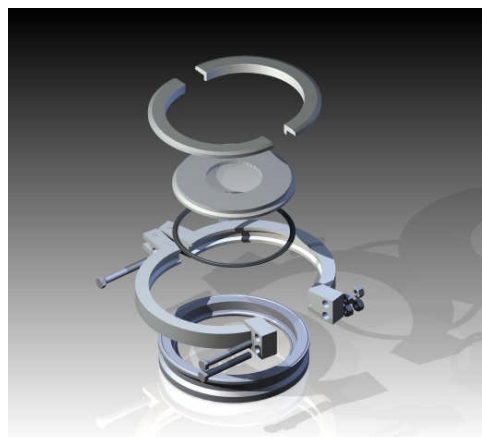




TANK COMPONENTS INDUSTRIES

An **LJSTAR** Company
INCORPORATED

TCI CLAMPCONNECT®



CLAMPCONNECT® SIZE	MAX WORKING PRESSURE (psi) @ 400° F
1/2" & 3/4"	100
1" & 1-1/2"	100
2"	100
2-1/2"	100
3"	100
4"	100
6"	80
8"	50

The ClampConnect® is offered in any Stainless Steel or Nickel Alloy materials, custom beveled or radiused bases are also available.

Where applicable, the hygienic union formed by the TCI ClampConnect® has been designed per the ASME BPE Standard. Sealing issues may develop when fittings, clamps and/or gaskets not compliant with the ASME BPE Standard are used. TCI can provide compliant clamps, fittings and gaskets at the Customer's request.

TCI ClampConnect® design analysis has been performed following the rules of ASME VIII Division 2, Mandatory Appendix 4: Design Based on Stress Analysis.

08/16