

# Full-View Visual Flow Indicator Designed for Sterile Service

Data Sheet 01-0091 08/02



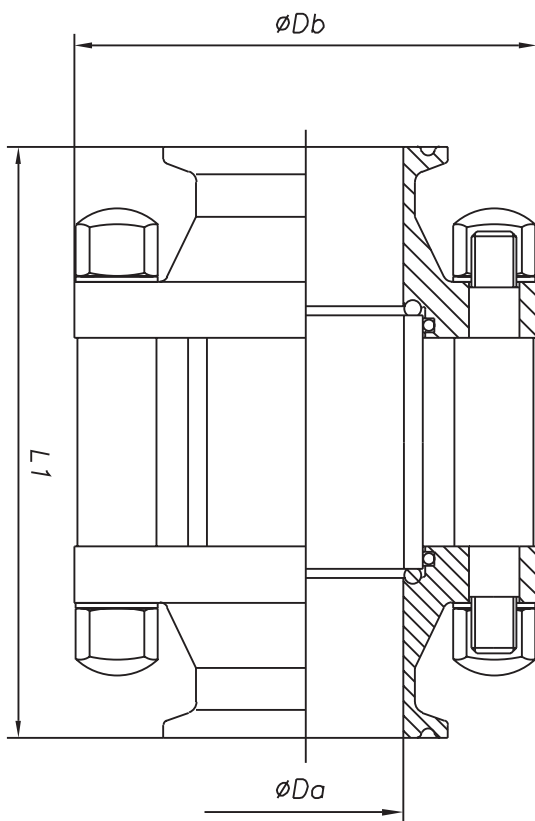
These sterile design visual flow indicators provide operators with a full 360° view of the flow of virtually any process pipeline fluid while imposing virtually no pressure drop on the line. Electropolished stainless steel sterile heads include clamp connections, butt weld and sterile quick connects.

Designed with unique o-ring seals, these sterile units provide a smooth transition between the stainless steel heads and the glass, eliminating any chances of product entrapment. In addition, these units are sterilizable and autoclavable. Spacers between the heads make maintenance easy and over-tightning of the glass impossible. These spacers along with acorn nuts eliminate exposed threads.

The units are rated for working pressures up to 150 psi. Standard material of construction for sanitary service is 316L stainless steel. For corrosive service, Hastelloy®, AL6XN®, Monel®, and Alloy 20 are also available. EPDM is the standard o-ring gasket material. FEP encapsulated silicone and silicone o-rings are available options.

Models are available in clamp sizes from 3/8" inch to 8 inches. Impact-resistant stainless steel mesh shields are also available to protect the glass column, if necessary. Custom designs are also available, including special lengths.

For additional information and applications assistance contact:  
**L.J. Star Incorporated, P.O. Box 1116, Twinsburg, OH 44087**  
**Phone: (330) 405-3040 • Fax: (330) 405-3070**  
**Web Page: [www.ljstar.com](http://www.ljstar.com) • e-mail: [view@ljstar.com](mailto:view@ljstar.com)**



DIMENSIONS (mm)			
Size	ø Da	ø Db	L1
3/8"	7.75 (0.31")	50 (1.97")	90 (3.54")
1/2"	9.40 (0.37")	50 (1.97")	90 (3.54")
3/4"	15.75 (0.62")	65 (2.56")	105 (4.13")
1"	22.10 (0.87")	70 (2.76")	105 (4.13")
1-1/2"	34.80 (1.37")	82 (3.23")	105 (4.13")
2"	47.50 (1.87")	100 (3.94")	140 (5.51")
2-1/2"	60.30 (2.37")	125 (4.92")	151 (5.94")
3"	71.90 (2.83")	135 (5.31")	181 (7.12")
4"	97.40 (3.83")	155 (6.10")	206 (8.11")
6"	148.20 (5.83")	215 (8.46")	254 (10.00")
8"	199.00 (7.83")	265 (10.43")	302 (11.89")

**L.J. STAR**  
 INCORPORATED