

Weld Neck Sightglass Fittings Series MV

ISO 9001

DATA SHEET 02-0040 12/03

Application:

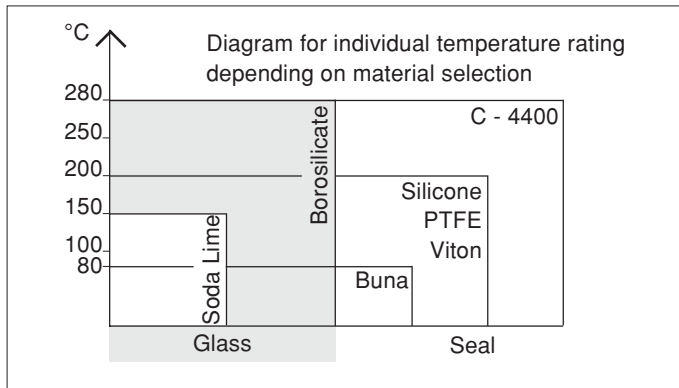
Butt-weld sightglass fitting with screwed cover flange. Sightport for viewing into process vessels, silos, mixers, separators, pipelines, and other usually closed containers. Particularly suitable for pharmaceuticals, food and beverage processing, e.g. breweries, dairies etc.

General:

Sightglass fittings specific to DIN 11851 (dairy standard fittings) with see-through circular glasses. Threaded nozzles have weld necks.

Operating Conditions

Pressure: 90 psi (higher pressure ratings on request), vacuum
 Temperature: max. 200°C (see temperature diagram) based on seal ring



Complete screwed sightglass fitting series MV

Combinations:

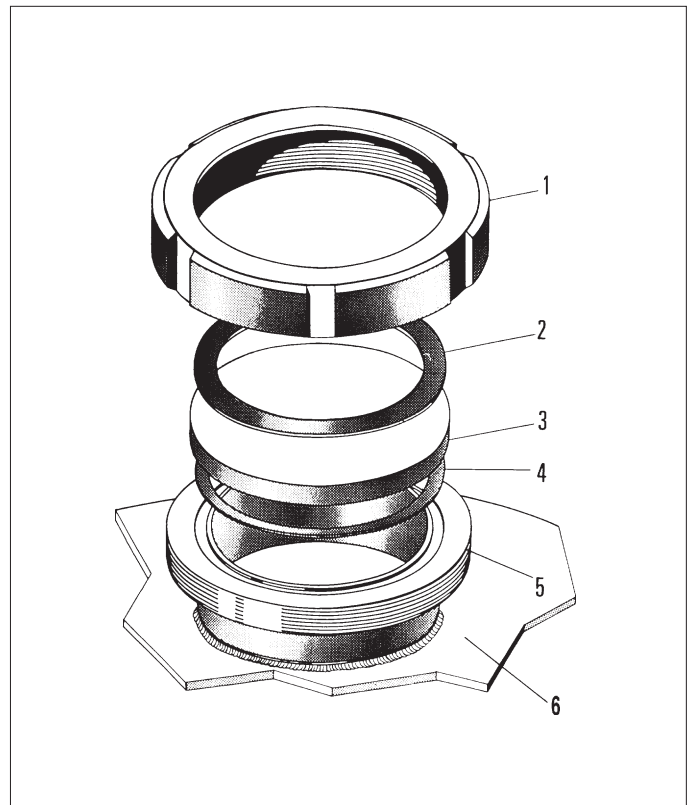
This sightglass unit can be combined with the Lumiglas luminaires for use in non hazardous areas. Window wipers, type SW1 can be fitted to sizes DN 65 and larger. Combination of luminaire plus wiper can be fitted to size DN 125.

Parts & materials: (drawing on the right)

| Items | Parts name | Material options |
|-------|-------------------|---|
| 1 | slotted cover nut | stainless steel type 304 |
| 2 | cushion gasket | Non-Asbestos |
| 3 | sightglass disc | soda lime glass, tempered for max temp 150°C; or borosilicate glass, tempered for max. temp 280°C |
| 4 | D-ring seal | Viton, PTFE, Buna, silicone |
| 5 | weld neck nozzle | stainless steel type: 316 L, 304; ASME material only available upon request |
| 6 | vessel wall | |

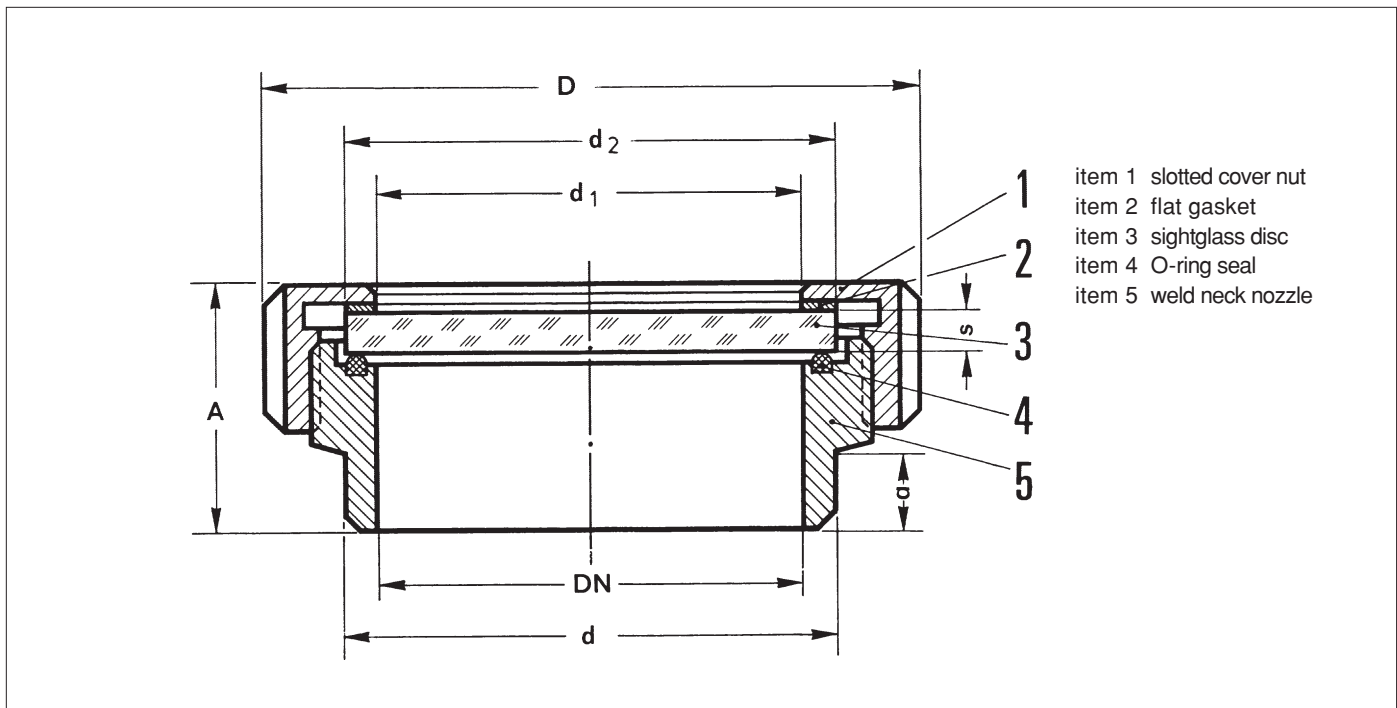
Assembly

After welding nozzle 5 into the vessel wall 6, fit O-ring seal 4, glass disc 3 and gasket 2 as shown in the drawing on the right. Tighten all these parts down against the nozzle by cover nut 1. Always use the special "C-Spanner".



Exploded view of an MV series screwed sightglass fitting

Dimensions of Screwed Sightglass Fittings



All dimensions in mm unless stated otherwise. Subject to change without prior notice

| Size | | DN 50 | DN 65 | DN 80 | DN 100 | DN 125 | DN 150 |
|------------------|-----|------------|-------------|-------------|-------------|-------------|-------------|
| Nominal bore | DN | 50 | 65 | 80 | 100 | 125 | 150 |
| Viewing diameter | d1* | 50 (1.97") | 65 (2.56") | 80 (3.15") | 100 (3.94") | 125 (4.92") | 150 (5.91") |
| Sightglass discs | d2 | 63 | 80 | 94 | 113 | 142 | 166 |
| | s | 10 | 12 | 12 | 15 | 15 | 15 |
| Fittings | D* | 92 (3.62") | 112 (4.41") | 127 (5.00") | 148 (5.83") | 178 (7.01") | 210 (8.27") |
| | d* | 61 (2.40") | 79 (3.11") | 93 (3.66") | 114 (4.49") | 136 (5.35") | 163 (6.42") |
| | A* | 44 (1.73") | 52 (2.05") | 57 (2.24") | 69 (2.72") | 59 (2.32") | 62 (2.44") |
| | a | 21 | 24 | 25 | 34 | 22 | 22 |

Ordering Information:

Please specify the selected items as follows:

e.g. Series MV, DN 80, nominal pressure 90 psi

Preferred material for: weld flange, glass discs, seals. Cover nut always 304

* Use mm dimensions for accuracy

ISO 9001 QA CERTIFICATE
 GERMAN MANUFACTURER:
 F.H. PAPANMEIER AWARDED QA APPROVAL CERTIFICATE



LJSTAR

INCORPORATED

PO Box 1116 • Twinsburg, OH 44087 • (330) 405-3040 • Fax 405-3070

E-mail: view@ljstar.com • Website: www.ljstar.com