



www.TankComponents.com



Tel: 417.831.5100
Fax: 417.831.5445

2000 North Alliance Avenue
Springfield, Missouri 65803

Tank Heads

TCI tank heads are used in the manufacturing of tanks and vessels for the pharmaceutical, chemical, biotech, cryogenic, municipal water treatment, extraction, and food/beverage industries.

ASME pressure vessel tank heads include ASME Flanged and Dished (F&D), 80:10, 80:6, 2:1 Elliptical, Hemispherical, and Toriconical tank heads.



ASME



80:10



80:6



2:1



Hemispherical



Toriconical

Non-ASME tank heads include Standard Flanged and Dished (F&D), Shallow F&D, Reversed F&D, Flanged Only, Dished Only, Dished and Flared (Flanged) and Conical heads. Special tank heads are available upon request.



Standard



Shallow



Reversed



Flanged Only



Dished Only



Dished & Flared

Tank head diameters include 9" to 130", 14 gauge to ½" thick, from Stainless Steel, Aluminum, Copper, and exotic alloys such as Hastelloy®, AL6XN, Duplex 2205, and Inconel®. Tank heads can be supplied polished with our state-of-the-art polishing equipment. Available weld preps include tapers, bevels, and lands.

- Available with waterjet cut holes

Tank Handholes & Access Ports

TCI tank handholes allow quick access into the tank interior for product inspection or sampling and are popular in pharmaceutical, extraction, chemical, biotech and food and beverage industries.

We offer a wide variety of handholes and tank access ports in various sizes and designs. Choose from the TCI-04, Ferrule Type, or integral sightglass access ports. Sizes include 4" to 12" from **Stainless Steel and exotic alloys such as Hastelloy®, AL6XN, Duplex 2205, and Inconel®.**



TCI-04
Handhole



Ferrule Type
Access Port



Sight Glass
Access Port

Tank Sanitary Fittings & Connections

All sanitary fittings and connections your project requires are available from TCI. We stock ferrule clamps, tapered ferrules, reducing ferrules, tube adaptor caps, heavy and light wall ferrules, and ferrule caps. We manufacture sanitary fittings from ASME material including Stainless Steel and exotic alloys such as Hastelloy®, AL6XN, Duplex 2205, and Inconel®. Our fittings come in a wide variety of stock and special lengths – custom designs available upon request.

Superior to other sanitary fittings, the TCI ClampConnect and TCI BoltConnect have an aseptic design ensuring a cleaner environment, making SIP/CIP easier. TCI ClampConnect is secured via a standard ferrule clamp, which eliminates the use of tools during installation and maintenance.



Ferrules



TCI BoltConnects



Tube Adapter Caps

Tank Manways

TCI Tank manways are a key component in many pharmaceutical, extraction, chemical, biotech and food and beverage tanks. Available in low, mid and high pressure applications, TCI's design is excellent for sanitary applications – no crevice for product buildup.

Our manway flanges are welded with full penetration welds and can be manufactured from **Stainless Steel and exotic alloys such as Hastelloy®, AL6XN, Duplex 2205, and Inconel®.**

The O-ring gasket is retained in the cover, so it will not fall into the vessel when the manway is opened. Our innovative Spring Assist reduces lifting force, and all-stainless-steel internals ensure the manway operates smoothly. Available with or without an ASME code certification.



Low to Mid Pressure Manway



Mid to High Pressure Manway



Mid to High Pressure Chemical Manway



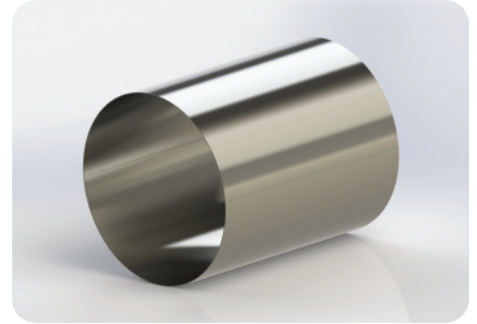
Atmospheric Cross-Arm Manway

Tank Components *Cylinders*

- All welding performed on our state-of-the-art Plasma Arc Seam Welder
- Diameters available from 12" - 120"
- Material Thicknesses available from 12 gauge - 1/2"
- Maximum Overall Length is 120"
- Available with or without ASME code stamp
- Available with waterjet cut holes

General Notes

- Manufactured from Stainless Steel, Aluminum and exotic alloys such as Hastelloy®, AL6XN, Duplex 2205, and Inconel®.
- Available polished Inside/Outside from 80 Grit to 320 Grit (5-10 Ra).
- Manufactured as Inside Diameter (ID) or Outside Diameter (OD).



Tank Components *5 Axis Cutting*

- Waterjet cutting of nozzle holes in heads.
- 5-Axis cutting allows for any angle or shape to be cut or trimmed.
- 3' of vertical travel on Z-Axis for tall parts.
- 8' x 12' Cutting Bed for large parts.
- Tubing or Pipe can be trimmed to any shape requirement.

Tank Components *Sightglasses & Lights*

TCI is a proud supplier of LJ Star Sightglasses and Lights.

- Sterile Visual Flow Indicators
- Explosion Proof and Non Explosion Proof Lights
- Metaglas® Sanitary Sight Window Series Metaclamp®
- Circular Bolt-On Sight Glass for ANSI Flange Connections
- Lumiglas® Hi-Pressure Weld-On Sight Glass Series DIN 28120
- Rectangular Weld-On for Level Indication
- Obround Weld-On for Level Indication



TCI Mission Statement

Attract and retain customers by providing superior tank components, focusing on our commitment to building mutually beneficial partnerships.